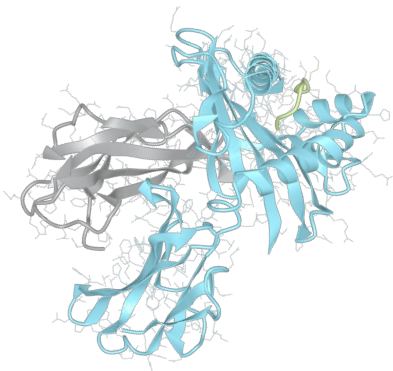


Product datasheet



sHLA-A*24:07bio

A*2407, A2407, A*24, A24, A24

Serological Name	A24
Peptide Load	Endogenous
Modification	Unmodified
Conjugation	Biotin
SKU	A2407bio

Product Description

Allele Name	A*24:07 B2m
HLA Class	HLA Class I
HLA Gene Locus	HLA-A
Alternative Allele Name A Chain	A*2407, A2407, A*24, A24, A24
Alternative Allele Name B Chain	-

Description Recombinant, truncated Class I soluble Human Leukocyte Antigen (sHLA), naturally folded and glycosylated, loaded with endogenous peptides.

Serological Name	A24
Serological Split	A9
Bw4/Bw6 Assignment	Bw4
Bw4/Bw6 Sequence	NLRIALR
Allele Frequency [World Population]	
A chain	2.9%
B chain	-

Associated products

[A2407](#)
[A2407pe](#)

Product Specification

Product name	HLA-A*24:07bio
HLA Species	Human
Host Cell Line Species	Human
Clone Designation	H5F8
Tail Specification	VLDL
Peptide Load	Endogenous
Modification	Unmodified
Conjugation	Biotin
Complexity	Monomer
Protein Format	Recombinant, truncated, soluble, non-modified, biotinylated, endogenously loaded
Storage Temperature	4 °C (This product should be stored undiluted)
Form	Liquid
Concentration	300.0 µg/µl
Formulation	PBS/0.02% Sodium Azide
pH	7.4
Purification Method	Affinity Chromatography
Grade	Research Use Only [RUO]
Authentication Verification	Sequence Based Typing

Protein Sequences

Alpha Chain Sequence	GSHSMRYFST SVSRPGRGEP RFIAVGYVDD TQFVRFSDSA ASQRMEPRAP WIEQEGPEYW DEETGKVKQAQ SQTRENLRIR ALRYYNQSEA GSHTLQMMFG CDVGS DGRFL RGYHQYAYDG KDYIALKEDL RSWTAADMAA QITKRKWEAA HVAEQRAYL EGTCDGLRR YLENGKETLQ RTDPPKTHMT HHPISDHEAT LRCWALGFYP AEITLTWQRD GEDQTQDTEL VETRPAGDGT FQKWAAVVVP SGEEQRYTCH VQHEGLPKPL TLRVSVSTDD DLA
Beta Chain Sequence	IQRTPKIQVY SRHPAENGKS NFLNCYVSGF HPSDIEVDLL KNGERIEKVE HSDLSFSKDW SFYLLYYTEF TPTEKDEYAC RVNHVTLSPQ KIVKWDRDM

Related Products

[A2402bio](#)
[A2403bio](#)
[A2301bio](#)
[A0201bio](#)

Applications

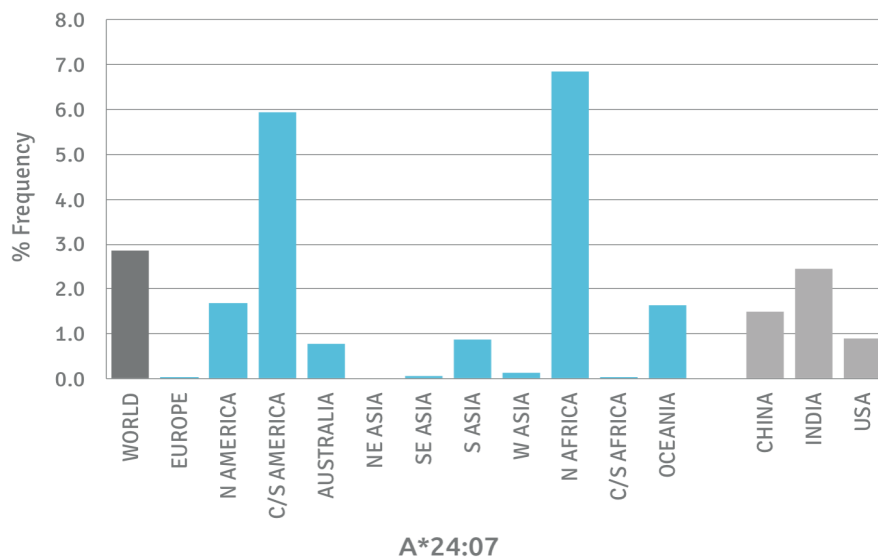
HLA Sandwich ELISAs
 HLA Direct ELISAs
 HLA-Sera Antibody Assays
 HLA Controls in ELISA Assays
 HLA Assay Standards
 HLA Blocking Assays
 HLA Neutralizing Assays
 HLA Competition Assays
 HLA Bead Assays
 HLA Immunization Procedures

Recommended Antibodies

W6/32
 Anti-B2m

Allele Frequency

Worldwide Allele Frequency



Please note:

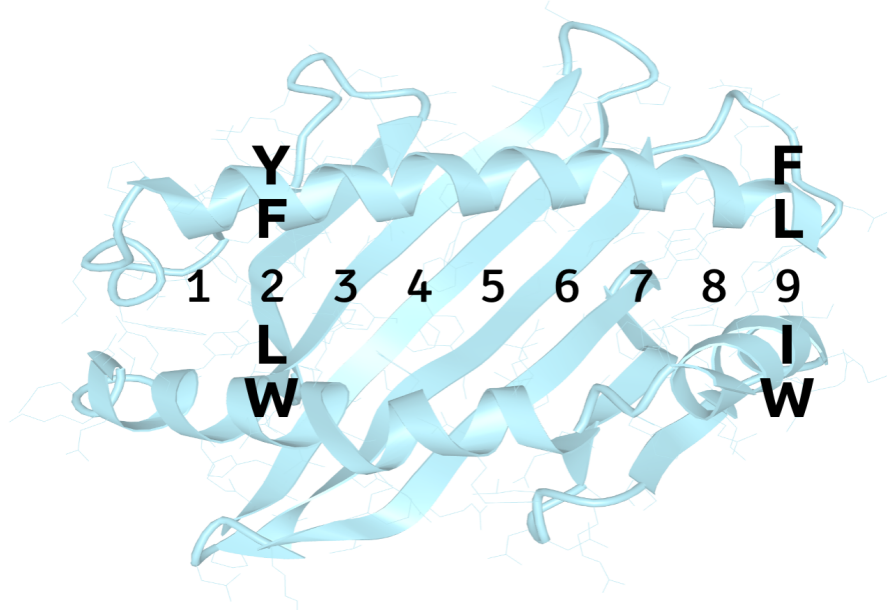
ALL PRODUCTS ARE FOR RESEARCH USE ONLY. NOT FOR COMMERCIAL USE IN DIAGNOSTIC PROCEDURES.
 For more information, please visit our Policies section on our website. For licensing inquiries, please contact

licensing@hlaprotein.com



Motif

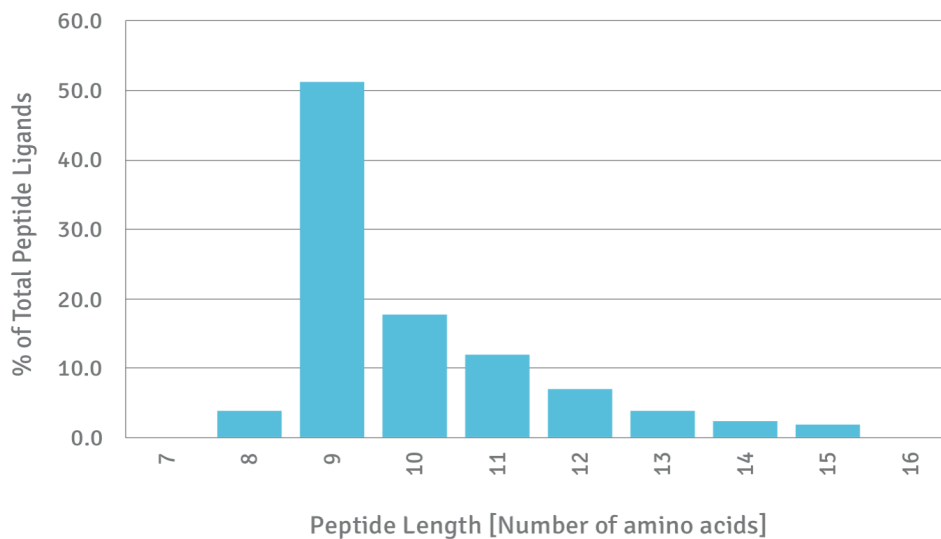
A*24:07 BINDING MOTIF



Length Distribution

HLA Length Distribution

A*24:07



Please note:

ALL PRODUCTS ARE FOR RESEARCH USE ONLY. NOT FOR COMMERCIAL USE IN DIAGNOSTIC PROCEDURES.

For more information, please visit our Policies section on our website. For licensing inquiries, please contact

licensing@hlaprotein.com

